

1

---

---

---

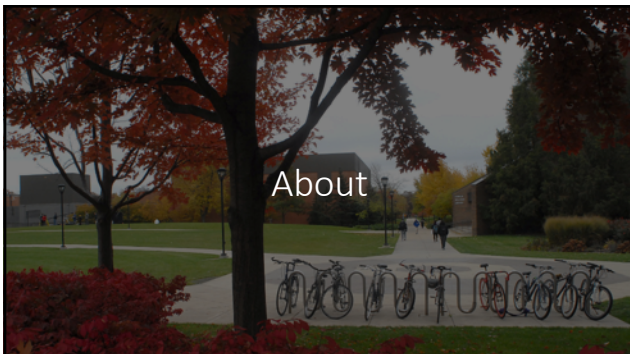
---

---

---

---

---



2

---

---

---

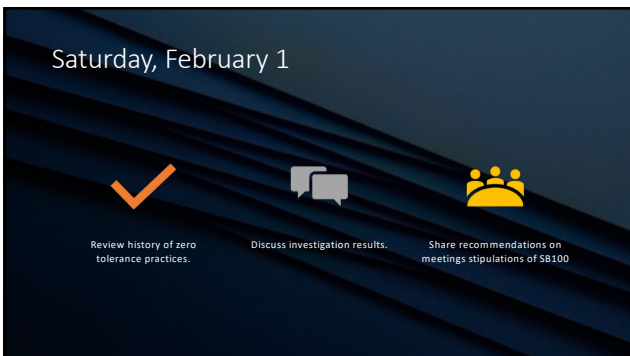
---

---

---

---

---



3

---

---

---

---

---

---

---

---



4

---

---

---

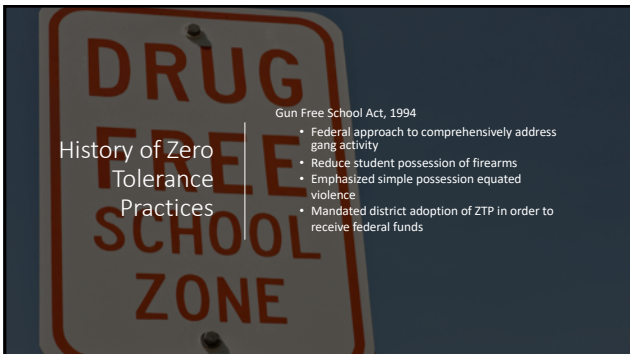
---

---

---

---

---



5

---

---

---

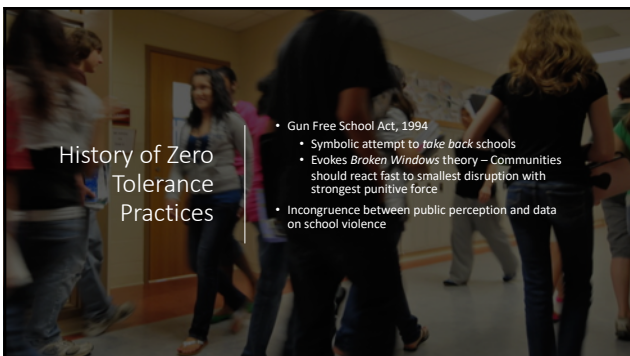
---

---

---

---

---



6

---

---

---

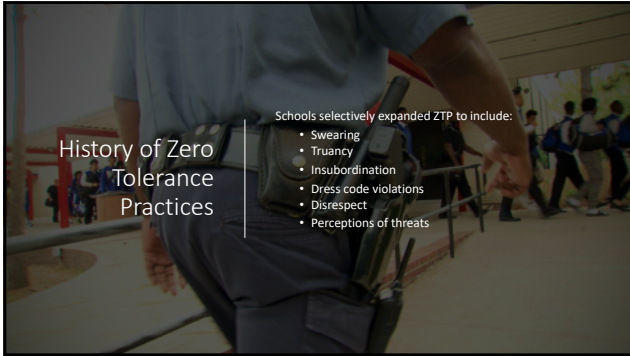
---

---

---

---

---



7

---

---

---

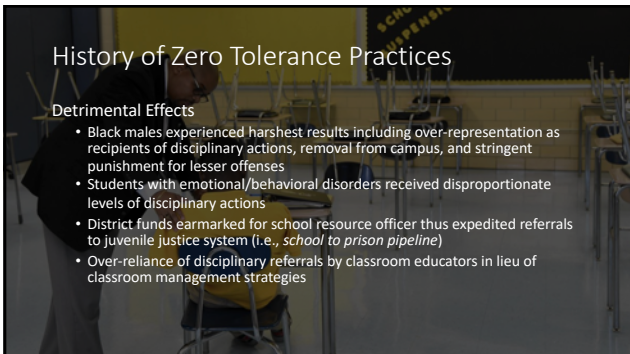
---

---

---

---

---



8

---

---

---

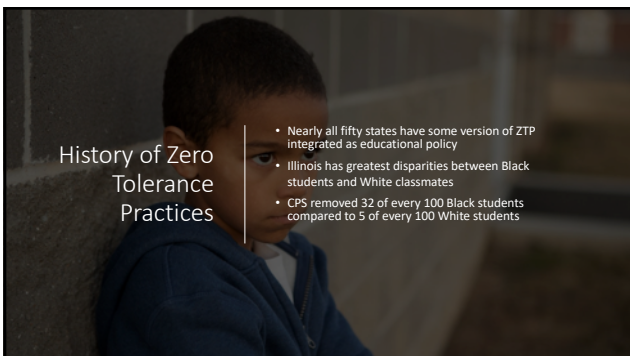
---

---

---

---

---



9

---

---

---

---

---

---

---

---



10

---

---

---

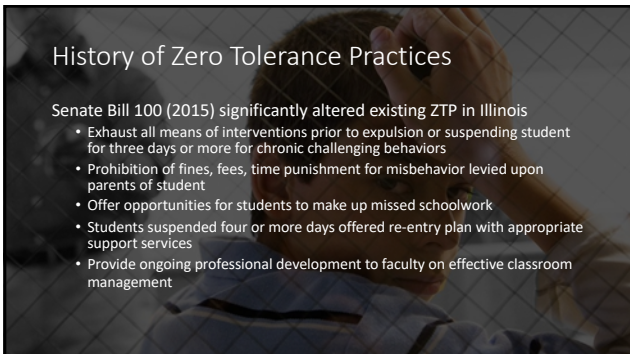
---

---

---

---

---



11

---

---

---

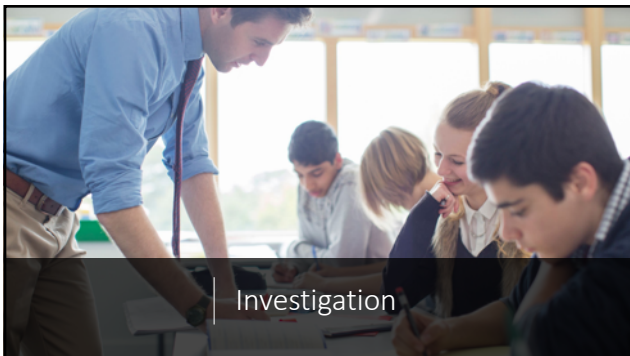
---

---

---

---

---



12

---

---

---

---

---

---

---

---



13

---

---

---

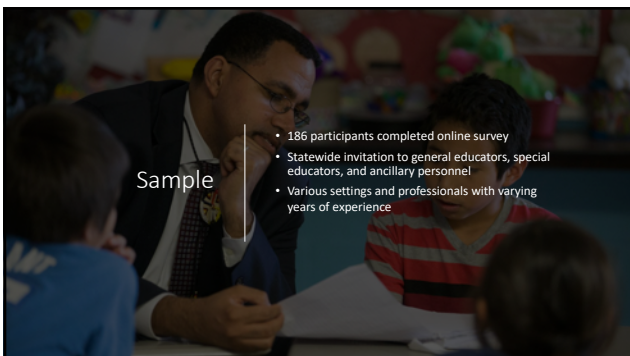
---

---

---

---

---



14

---

---

---

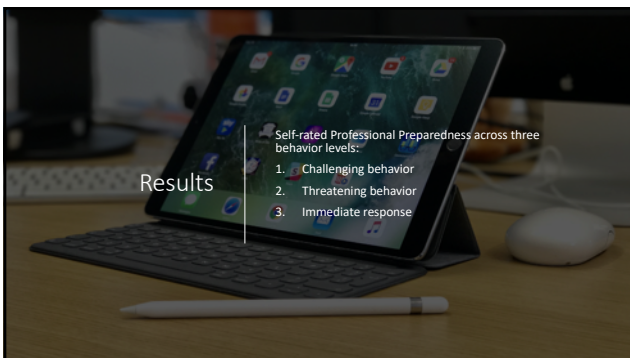
---

---

---

---

---



15

---

---

---

---

---

---

---

---

Results

Level		GEN ED	SPED	t-value	prob.
Challenging behavior	M	3.09	3.63	-2.09	0.038
	SD	1.58	1.55		
Threatening behavior	M	2.58	3.16	-1.29	0.197
	SD	1.26	1.52		
Immediate response	M	3.69	3.53	0.643	0.521
	SD	1.71	1.60		

16

---

---

---

---

---

---

---

---

Results

Illinois Senate Bill 100	n	%
Knowledge/Awareness	125	67
No Knowledge/Awareness	61	33
Professional Development	n	%
Received Training on SB 100	30	16
Did Not Receive Training	152	82
Not Sure	4	2

17

---

---

---

---

---

---

---

---

Results

Gender	n	%
Female	158	85
Male	28	15
Racial/Ethnic Identity	n	%
White	129	69
Black or African American	31	17
American Indian or Alaska Native	1	0.5
Hispanic or Latino	22	12
Asian or Pacific Islander	2	1
Other	1	0.5
Initial License	n	%
General education	72	39
Special education	114	61
Years of Professional Experience	n	%
Less than 3 years	74	40
3 to 9 years	102	55
10 to 20 years	9	5
Over 20 years	1	0.5

18

---

---

---

---

---

---

---

---



Results

*Students in my old district came with a lot more baggage than I see here. Many of them had already been suspended several times by the time they reached high school and didn't think of it as a big deal. And bringing anything that could be considered a weapon was not a big deal either. It was just confiscated, and they were suspended. Back in class a day or two later...like nothing happened.*

19

---

---

---

---

---

---

---

---

Results

*...it seems like a mismatch. There are some teachers, not all, but some that have very unrealistic expectations for their students. I'm not sure because these are (mostly) White teachers working with Black students, Hispanic students, who feel easily disrespected when kids don't follow. They seem to take any misbehavior as a form of disrespect and feel that's ground for suspension.*

20

---

---

---

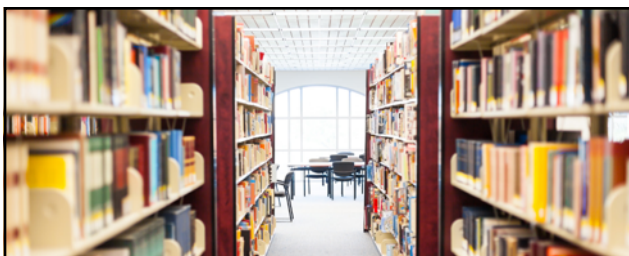
---

---

---

---

---



Recommendations

21

---

---

---

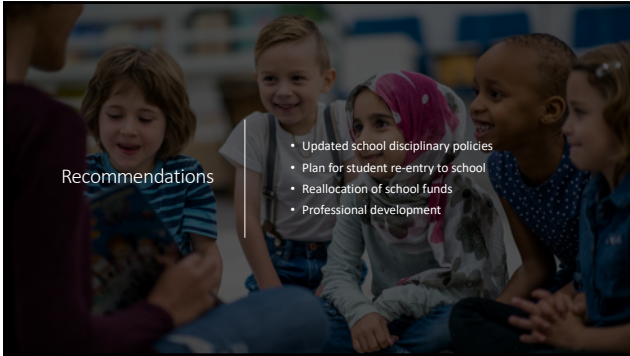
---

---

---

---

---



Recommendations

- Updated school disciplinary policies
- Plan for student re-entry to school
- Reallocation of school funds
- Professional development

22

---

---

---

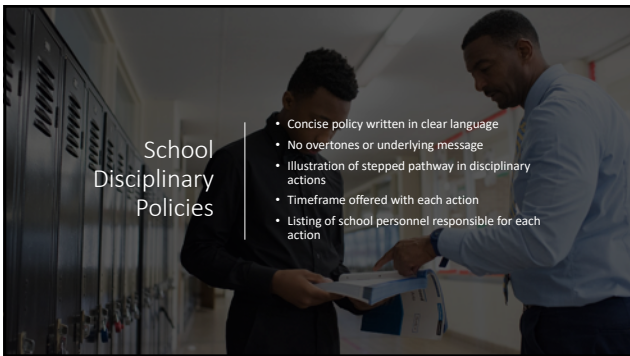
---

---

---

---

---



School Disciplinary Policies

- Concise policy written in clear language
- No overtones or underlying message
- Illustration of stepped pathway in disciplinary actions
- Timeframe offered with each action
- Listing of school personnel responsible for each action

23

---

---

---

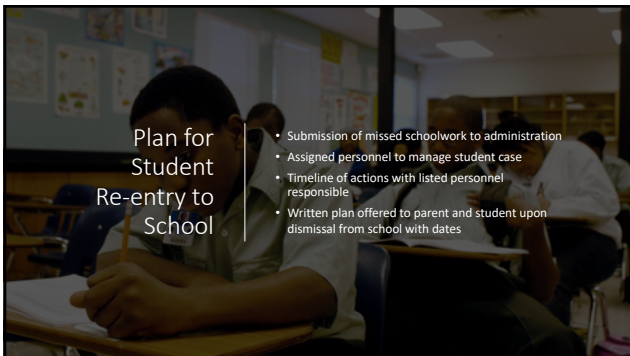
---

---

---

---

---



Plan for Student Re-entry to School

- Submission of missed schoolwork to administration
- Assigned personnel to manage student case
- Timeline of actions with listed personnel responsible
- Written plan offered to parent and student upon dismissal from school with dates

24

---

---

---

---

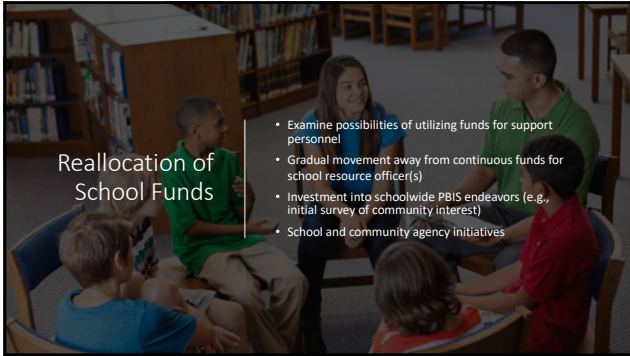
---

---

---

---





25

---

---

---

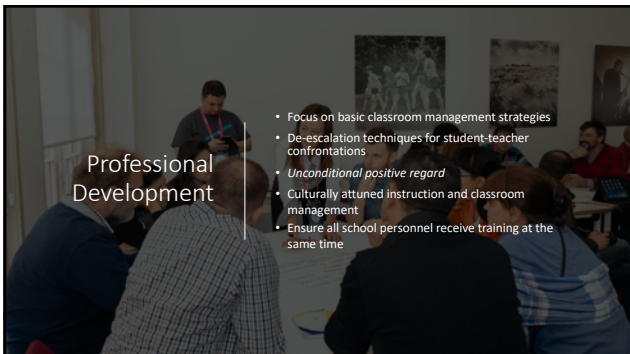
---

---

---

---

---



26

---

---

---

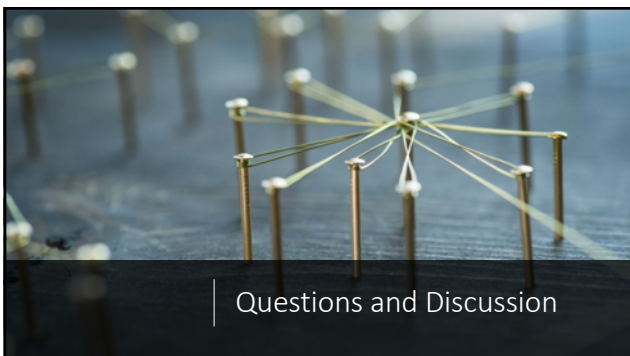
---

---

---

---

---



27

---

---

---

---

---

---

---

---



28

---

---

---

---

---

---

---

---